

*BACKLIGHT*

**CHIARO** for Armstrong® WoodWorks® Ceiling Systems

# CHIARO

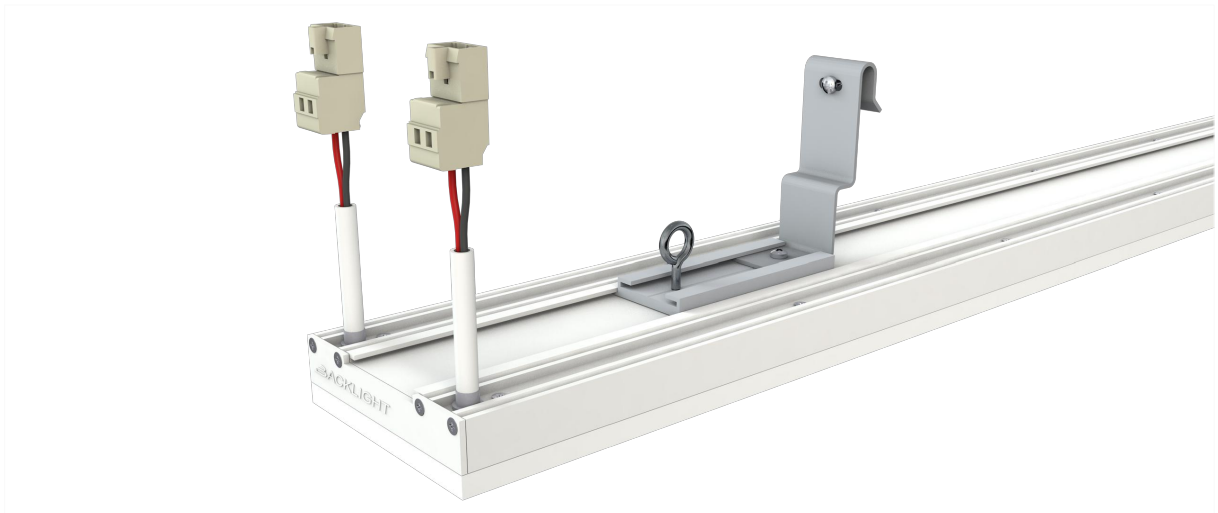
Ceiling

## Type

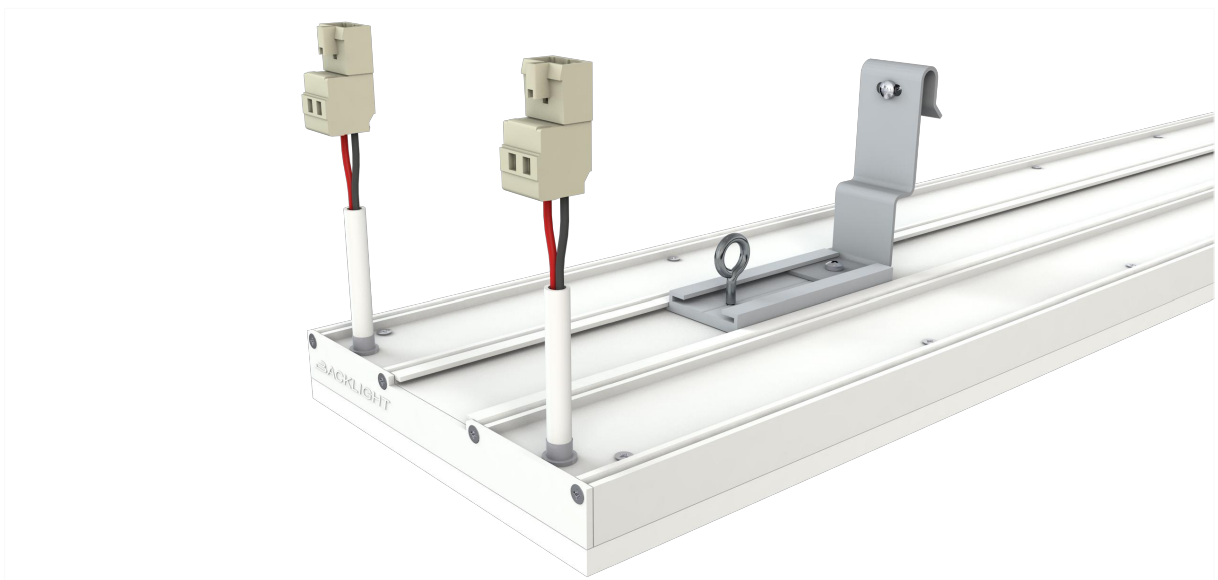
Width 2"






Width 3.25"



Width 5.25"



## Technical Specs

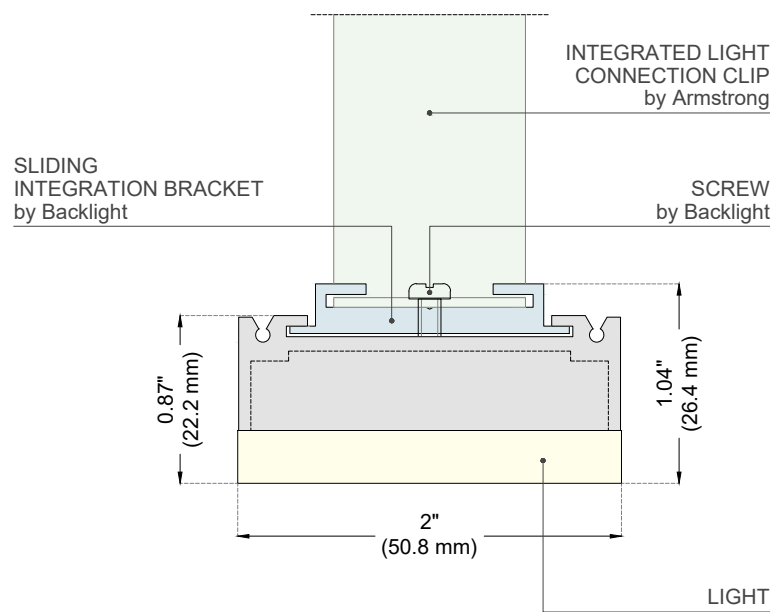
|                                |   |   |             |
|--------------------------------|---|---|-------------|
| WIDTH                          | 2" (50.8 mm) - 3.25" (82.55 mm) - 5.25" - (133.35 mm)   |   |             |
| MIN LENGTH                     | 4" (101.6 mm)   |   |             |
| MAX LENGTH                     | 120" (3048 mm)  |   |             |
| SURFACE PRINTABLE WITH TEXTURE | ✓ HDR file required   |   |             |
| COLOR TEMPERATURE              | <div>  2700 K  3000 K  3500 K  4100 K  5000 K  Tun. White 2700-6500  RGB * </div> <p>* RGBW, CUSTOM TUNABLE, DIM TO WARM and other KELVIN under request</p> |   |             |
| FINISH                         | STANDARD WHITE RAL 9010 or STANDARD BLACK<br>CUSTOM RAL under request   |   |             |
| CRI                            | > 95  |   |             |
| SDCM                           | 3   |   |             |
| INPUT VOLTAGE                  | 24VDC   |   |             |
| DRIVER                         | AC DC 24V DC OUTPUT (class 2 Power Unit)  |   |             |
| CABLE SIZE                     | 2 x 18 AWG  |   |             |
| MAX DISTANCE                   | Max distance between driver and fixture 10 meters (~ 400"). For longer distances contact us.  |   |             |
| DIMMABILITY                    | ✓ by all existing systems (PWM, ELV/MLV, 0-10V, DALI, DALI 2, LUTRON, DMX ...)  |   |             |
| POWER CONSUMPTION              | STANDARD BRIGHT   | 14 W / meter - 4.5 W / foot               | (long side) |
|                                | HIGH BRIGHT   | 28 W / meter - 9 W / foot                 | (long side) |
| LUMEN DELIVERED                | STANDARD BRIGHT   | 890 lum del / meter - 280 lum del / foot  | (long side) |
|                                | HIGH BRIGHT   | 1780 lum del / meter - 560 lum del / foot | (long side) |
| LED EFFICACY                   | 128 Lumen / Watt  |   |             |
| IP RATING / IK RATING          | IP40 for Dry Location (IP54 for Damp Location under request) / IK10   |   |             |
| WEIGHT                         | 25 Kg /mq (5.7 lbs / sq. ft)  |   |             |
| LIFE TIME                      | 70.000 hrs  |   |             |
| WARRANTY                       | 3 Years (36 months) from shipping   |   |             |
| CERTIFICATIONS                 | <div>     </div> <ul style="list-style-type: none"> <li>• Ceiling surface Mounted</li> <li>• Ceiling recessed Type IC Inherently protected</li> <li>• Wall surface Mounted</li> <li>• NEW Storage Area of a Clothes Closet</li> </ul>   |   |             |

CHIARO 2"

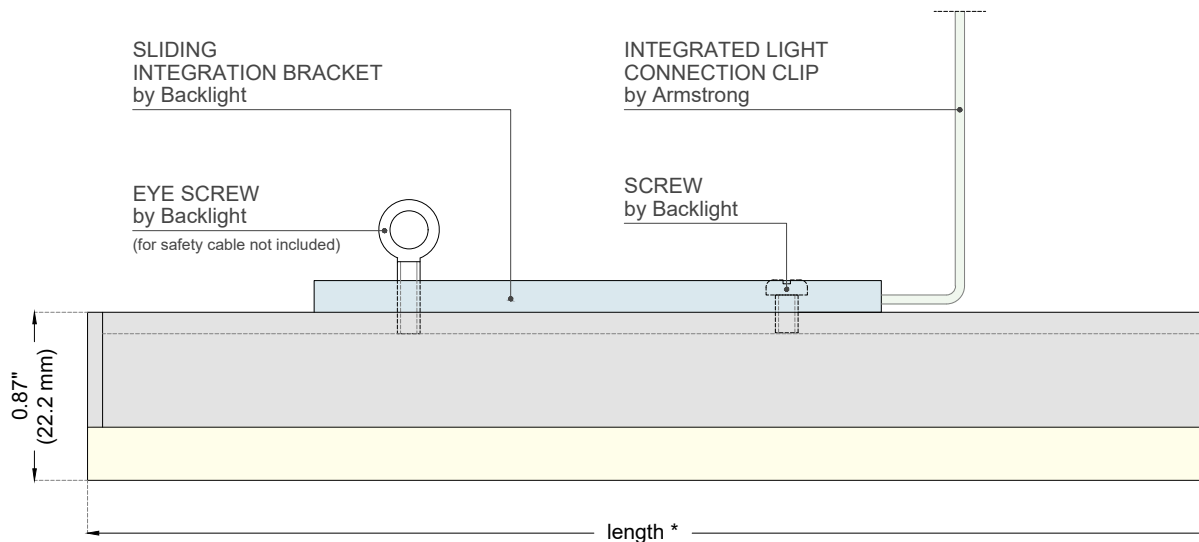
Ceiling

Section 2"

CROSS SECTION



LONGITUDINAL SECTION



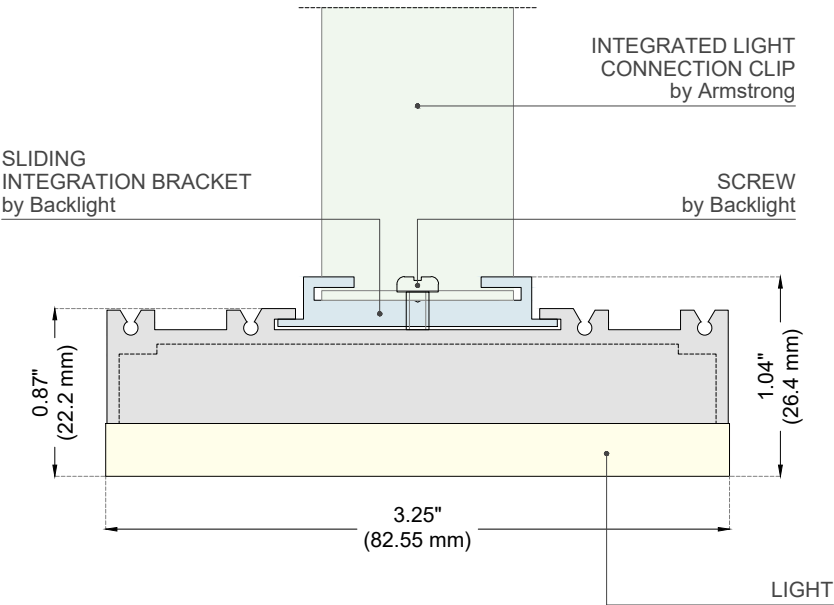
\* STANDARD LENGTH: 23" - 23.375" - 47" - 47.375" - 95" - 95.25" - 95.75" \* CUSTOM LENGTH: from 4" to 120"

CHIARO 3.25"

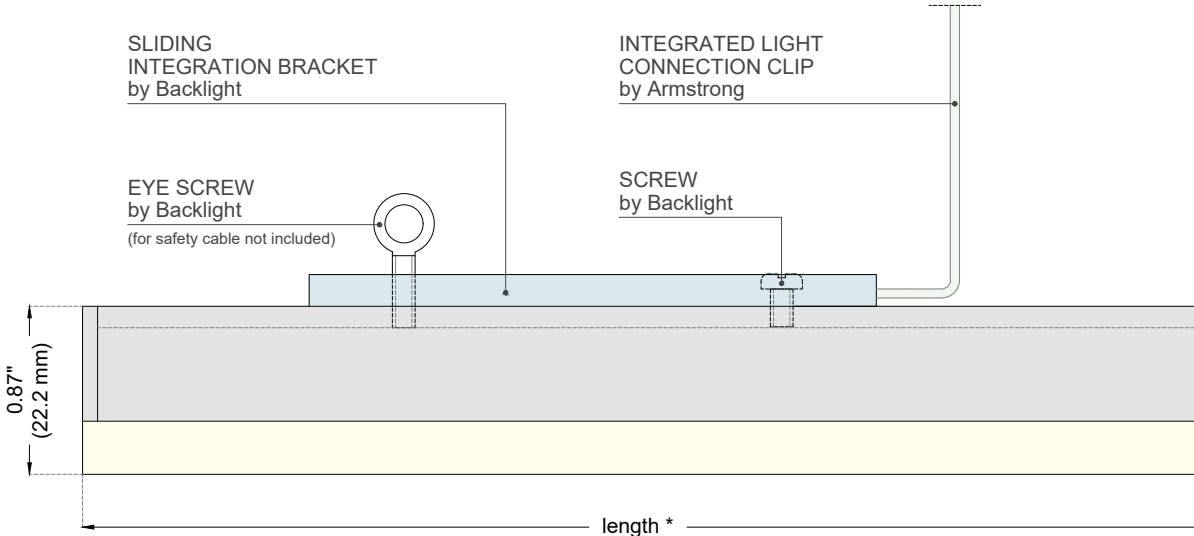
Ceiling

Section 3.25"

CROSS SECTION



LONGITUDINAL SECTION



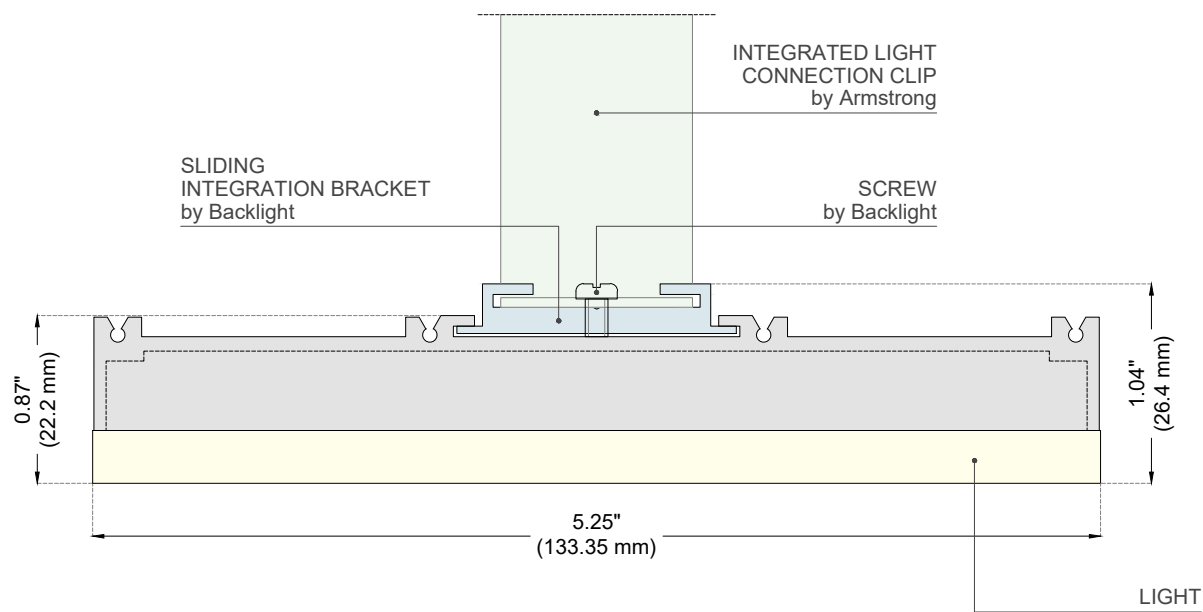
\* STANDARD LENGTH: 23" - 23.375" - 47" - 47.375" - 95" - 95.25" - 95.75" \* CUSTOM LENGTH: from 4" to 120"

CHIARO 5.25"

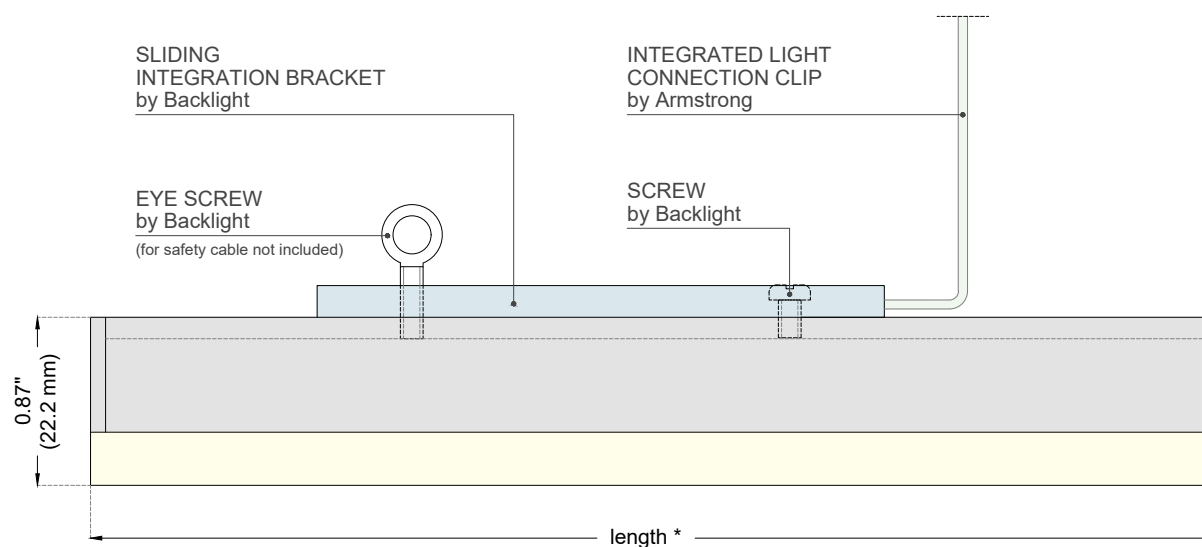
Ceiling

Section 5.25"

CROSS SECTION



LONGITUDINAL SECTION

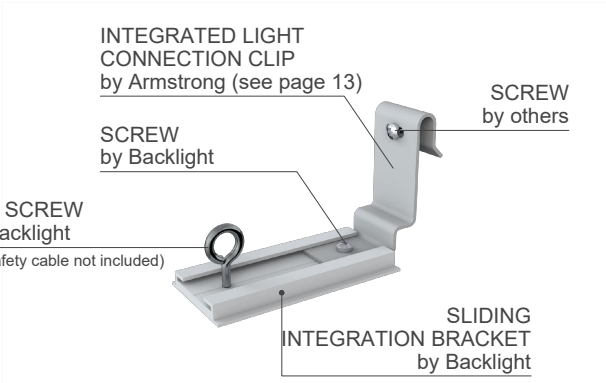
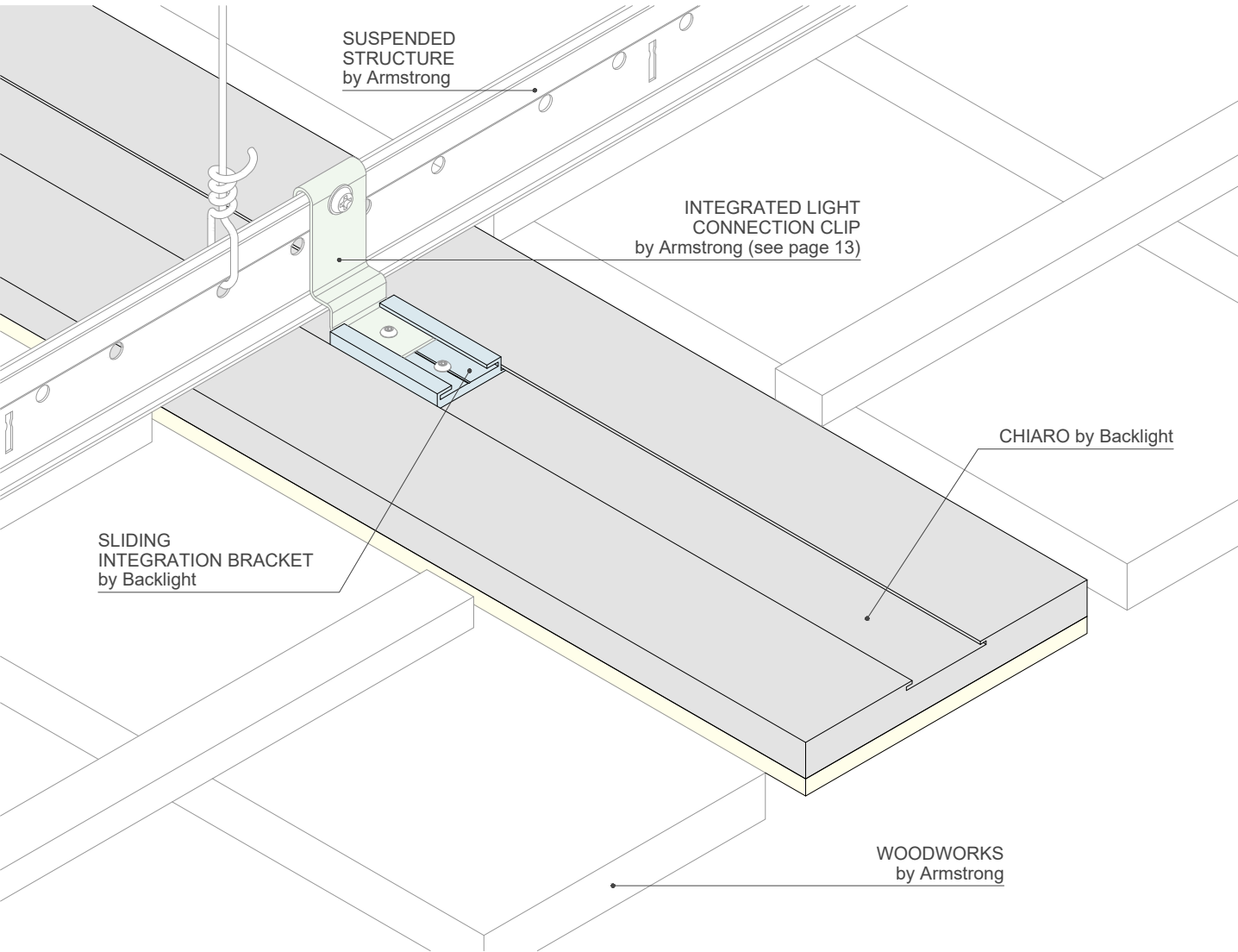


\* STANDARD LENGTH: 23" - 23.375" - 47" - 47.375" - 95" - 95.25" - 95.75" \* CUSTOM LENGTH: from 4" to 120"

CHIARO

Ceiling

Example of installation by Armstrong® Ceiling Solutions



For full Armstrong® WoodWorks® Ceiling Systems selection go to [www.armstrongceilings.com](http://www.armstrongceilings.com)

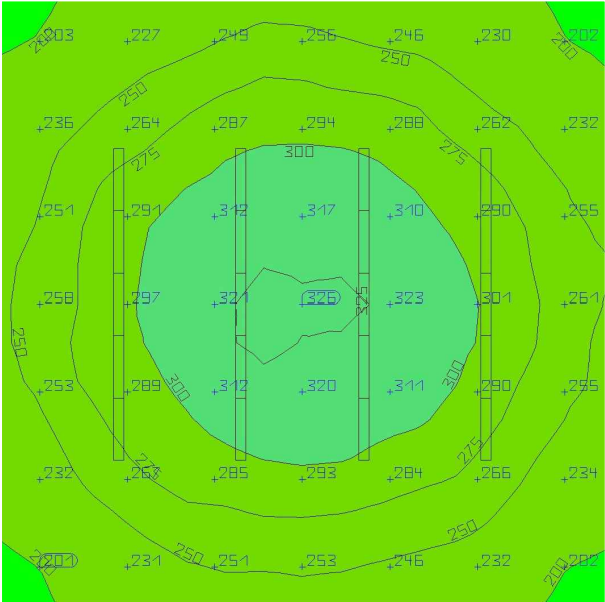
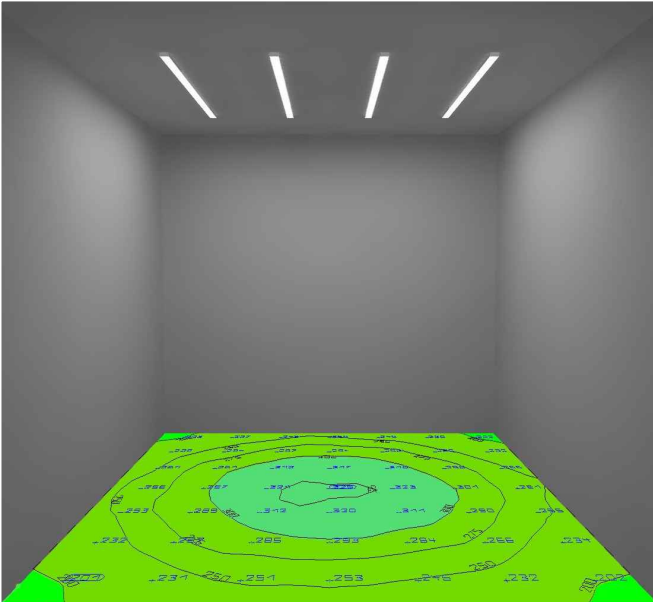
CHIARO

Ceiling

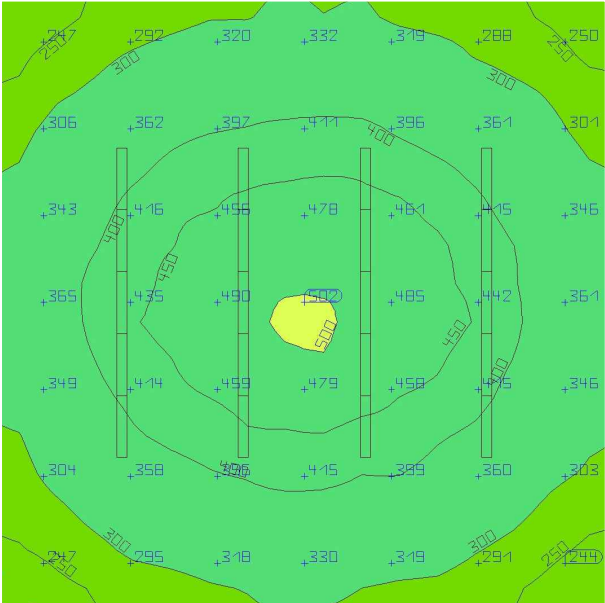
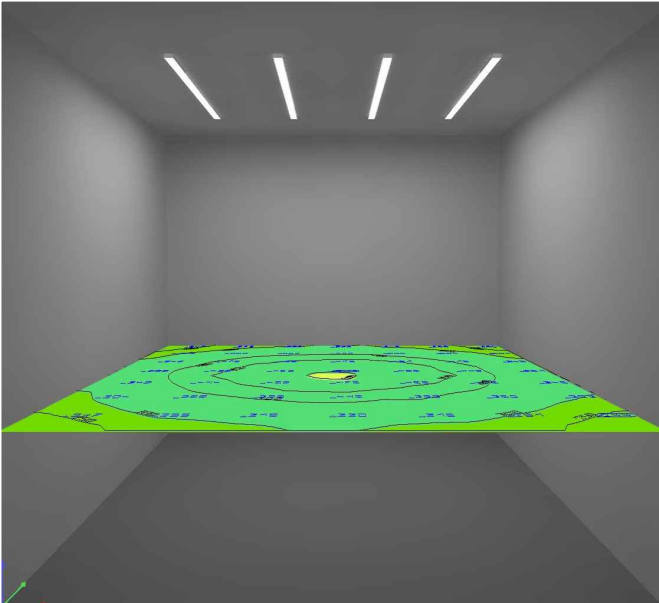
Photometric case study

Example of a room 3 x 3 x h 2.70 meters (118" x 118" x h 106") with 4 lamps HIGH BRIGHT 50.8 x 1524 mm (2" x 60") static white.

Floor calculation H 0.00 meters (0")



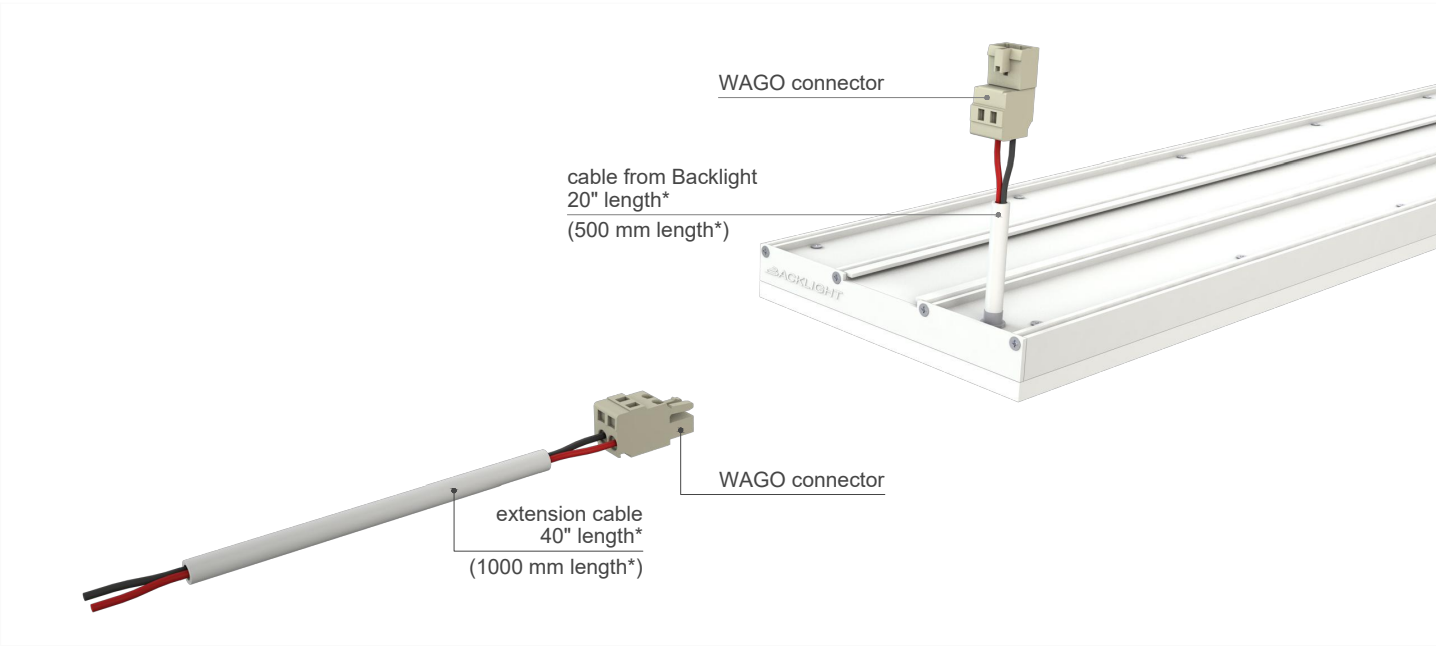
Desk calculation H 0.80 meters (31.5")



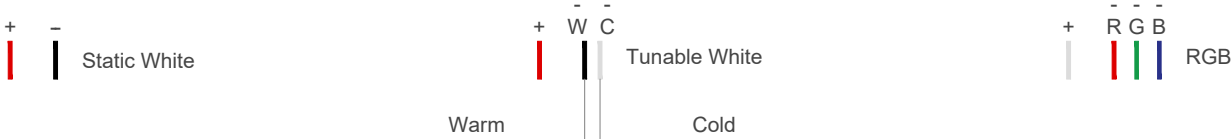
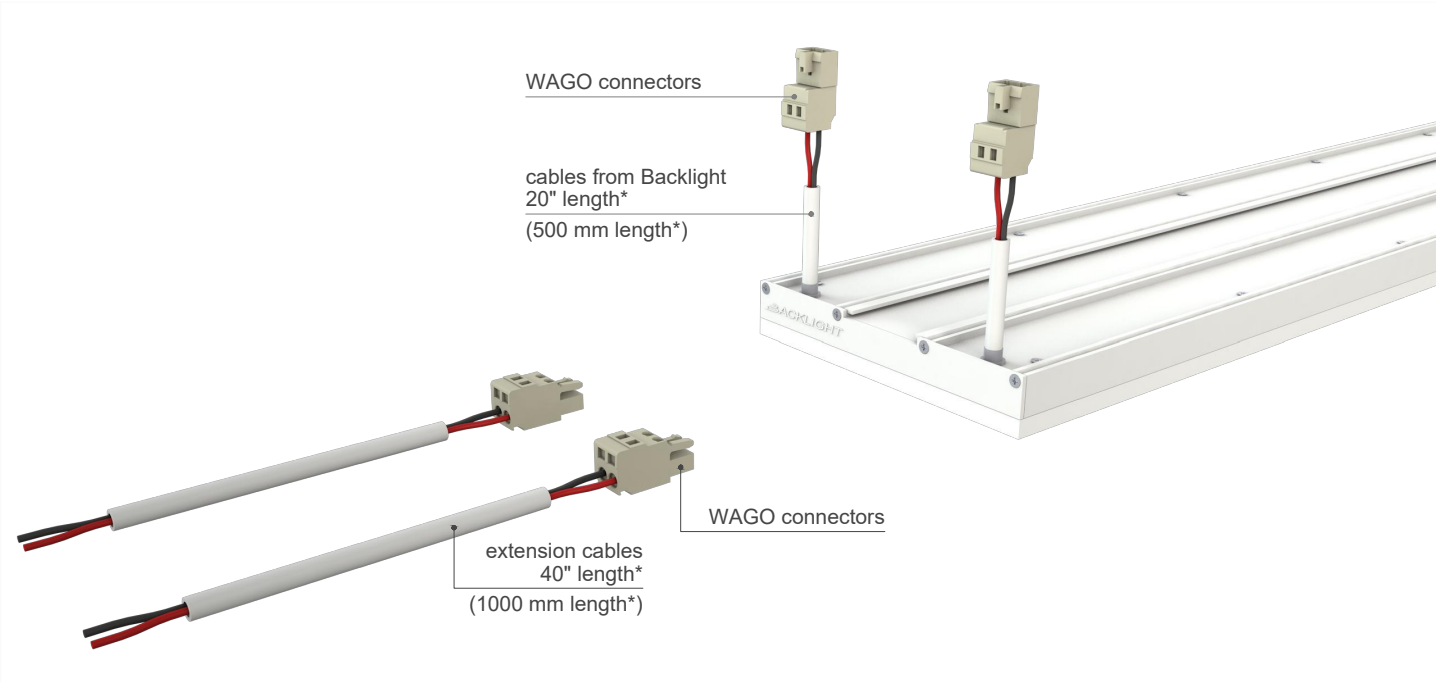


Cables position and options

Example of static white - For max 42 W panels - 1 cable needed



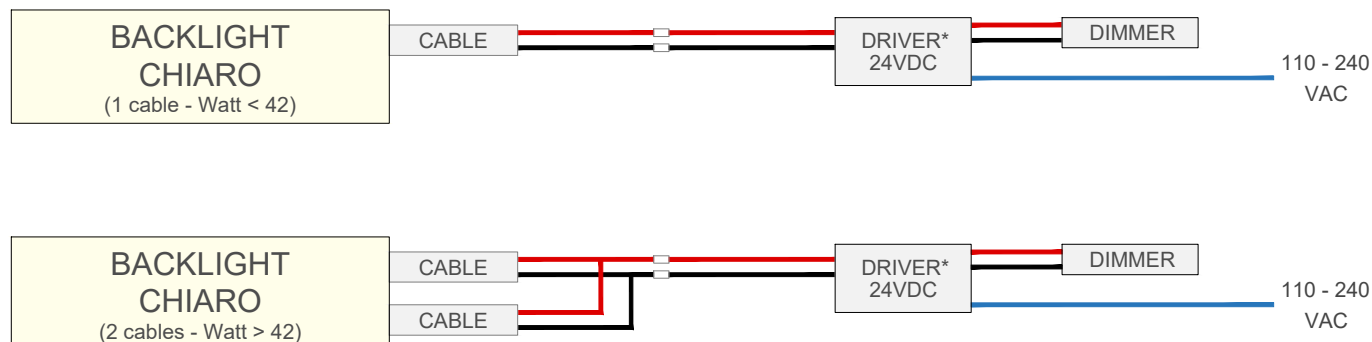
Example of static white - For panels with power higher than 42 W - 2 cables needed



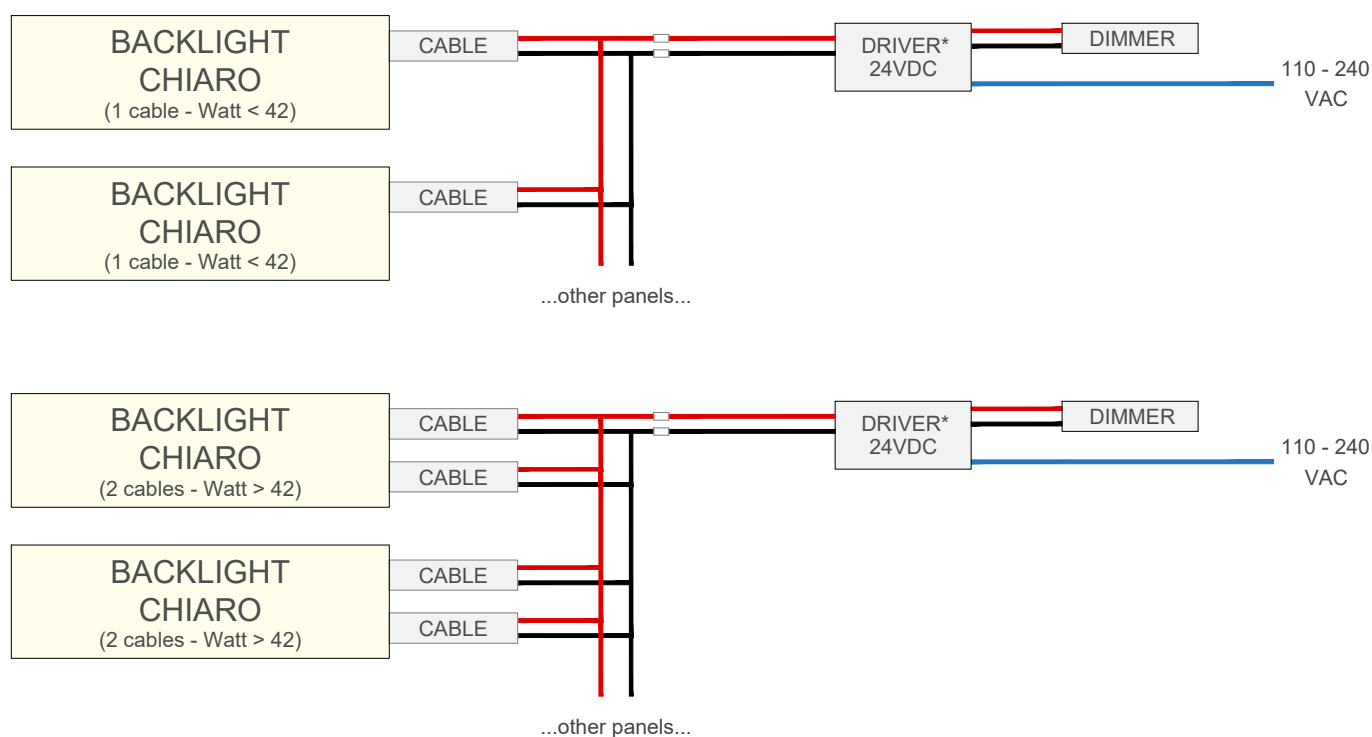
\* custom length of cables under request

## Wiring

Example of static white - 1 driver for 1 panel



Example of static white - 1 driver for more panels



\* SPECS ON DRIVER NEEDED:

- OUTPUT: 24 VDC (constant voltage).
- WATTAGE: according to the wattage of panels each driver needs to drive.
- NO FLICKERING VERSION.
- CERTIFICATION: according to the Country.
- DIMMABILITY: if required.

Regarding the dimming we do not have particular suggestion as Backlight CHIARO can be dimmable by all existing systems.

## Driver

## DRIVER 1-10V / 10V PWM / Resistance

| EXAMPLE         |      | LPF-16D-24 | LPF-25D-24 | LPF-40D-24 | LPF-60D-24 | LPF-90D-24 |
|-----------------|------|------------|------------|------------|------------|------------|
| Standard CHIARO | Watt |            |            |            |            |            |
| 2" x 95"        | 34 W | -          | -          | 1 lamp     | -          | 2 lamps    |
| 3.25" x 95"     | 68 W | -          | -          | -          | -          | 1 lamp     |
| 5.25" x 95"     | 68 W | -          | -          | -          | -          | 1 lamp     |
| 2" x 23.375"    | 9 W  | 1 lamp     | 2 lamps    | 4 lamps    | 6 lamps    | 9 lamps    |
| 3.25" x 23.375" | 17 W | -          | 1 lamp     | 2 lamps    | 3 lamps    | 4 lamps    |
| 5.25" x 23.375" | 17 W | -          | 1 lamp     | 2 lamps    | 3 lamps    | 4 lamps    |
| 3.25" x 47.375" | 34 W | -          | -          | 1 lamp     | -          | 2 lamps    |
| 5.25" x 47.375" | 34 W | -          | -          | 1 lamp     | -          | 2 lamps    |
| 2" x 23"        | 9 W  | 1 lamp     | 2 lamps    | 4 lamps    | 6 lamps    | 9 lamps    |
| 3.25" x 23"     | 17 W | -          | 1 lamp     | 2 lamps    | 3 lamps    | 4 lamps    |
| 5.25" x 23"     | 17 W | -          | 1 lamp     | 2 lamps    | 3 lamps    | 4 lamps    |
| 2" x 47"        | 17 W | -          | 1 lamp     | 2 lamps    | 3 lamps    | 4 lamps    |
| 3.25" x 47"     | 34 W | -          | -          | 1 lamp     | -          | 2 lamps    |
| 5.25" x 47"     | 34 W | -          | -          | 1 lamp     | -          | 2 lamps    |
| 3.25" x 95.25"  | 68 W | -          | -          | -          | -          | 1 lamp     |
| 5.25" x 95.25"  | 69 W | -          | -          | -          | -          | 1 lamp     |

For different type of dimming please contact us at [chiaro.armstrong@backlightsrl.com](mailto:chiaro.armstrong@backlightsrl.com)

You can find the technical data sheets pasting these links on your browser :

LPF-16D-24 <https://www.meanwell.com/webapp/product/search.aspx?prod=LPF-16D>

LPF-25D-24 <https://www.meanwell.com/webapp/product/search.aspx?prod=LPF-25D>

LPF-40D-24 <https://www.meanwell.com/webapp/product/search.aspx?prod=LPF-40D>

LPF-60D-24 <https://www.meanwell.com/webapp/product/search.aspx?prod=LPF-60D>

LPF-90D-24 <https://www.meanwell.com/webapp/product/search.aspx?prod=LPF-90D>

# CHIARO

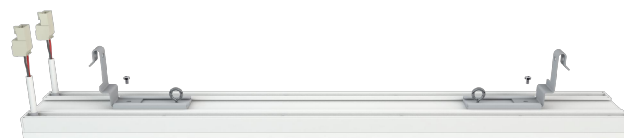
## Ceiling

### Assembly instructions

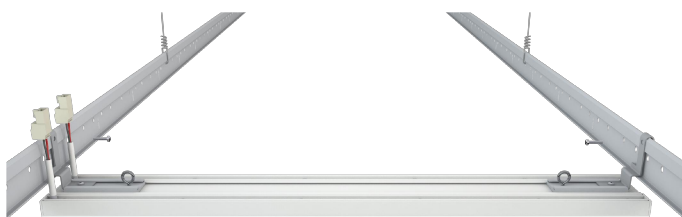
- 1) Insert the Sliding Integration Brackets in the track on the back of CHIARO lamp.



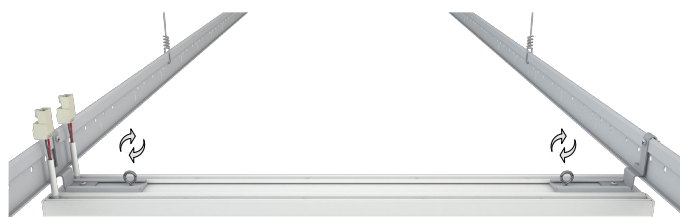
- 2) Screw the Armstrong® Integrated Light Connection Clips on the Sliding Integration Brackets (for type of clips refer to our technical catalogue).



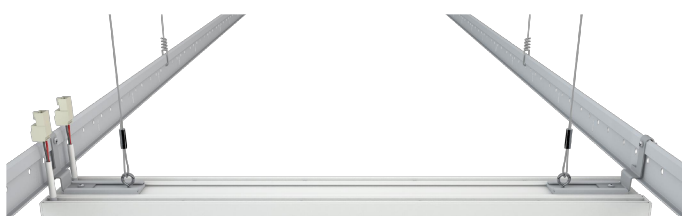
- 3) Slide the system manually and screw it on the Armstrong® suspended structure.



- 4) Turn the eye/ring screws by hand for a safety lock.



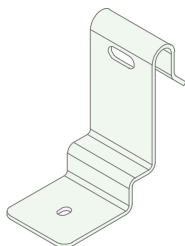
- 5) if needed, use the eye/ring screws for safety cables.



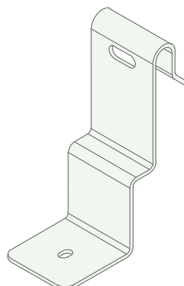
- 6) Connect the power cables coming from the driver and enjoy your light.



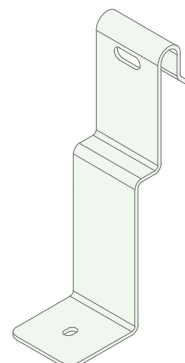
## Some example of Integrated Light Connection Clips\* by Armstrong® Ceiling Solutions



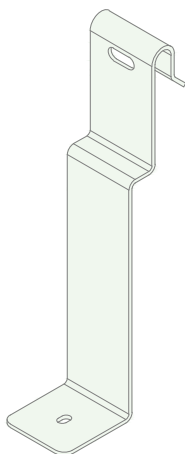
8171WLSPC01  
WoodWorks® Linear Solid Wood Panels



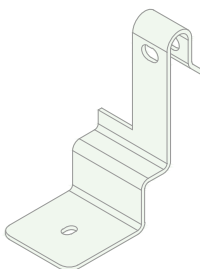
8171WGB0C01  
WoodWorks® Grille



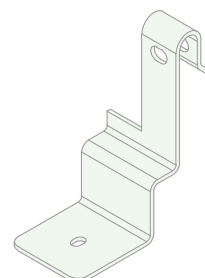
8171WGB0C02  
WoodWorks® Grille



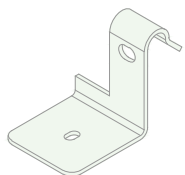
8171WGB0C03  
WoodWorks® Grille



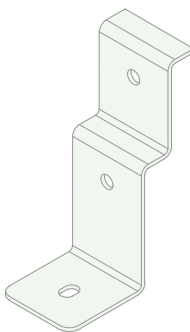
8171WGTTTC01  
WoodWorks® Grille Tegular



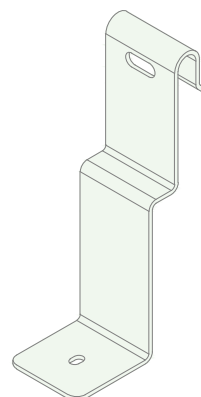
8171WGTTTC02  
WoodWorks® Grille Tegular



8171WGTTTC03  
WoodWorks® Grille Tegular



8171WGTMTC01  
(mount on 24" stabilizer bar)  
WoodWorks® Grille Tegular



8171WLVP01  
WoodWorks® Linear Veneered Panels

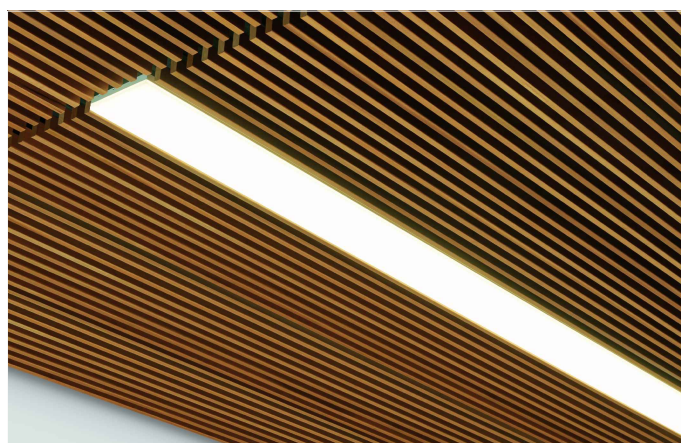
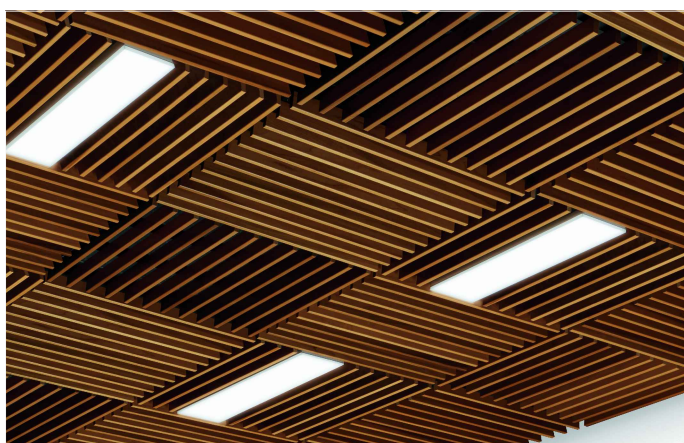
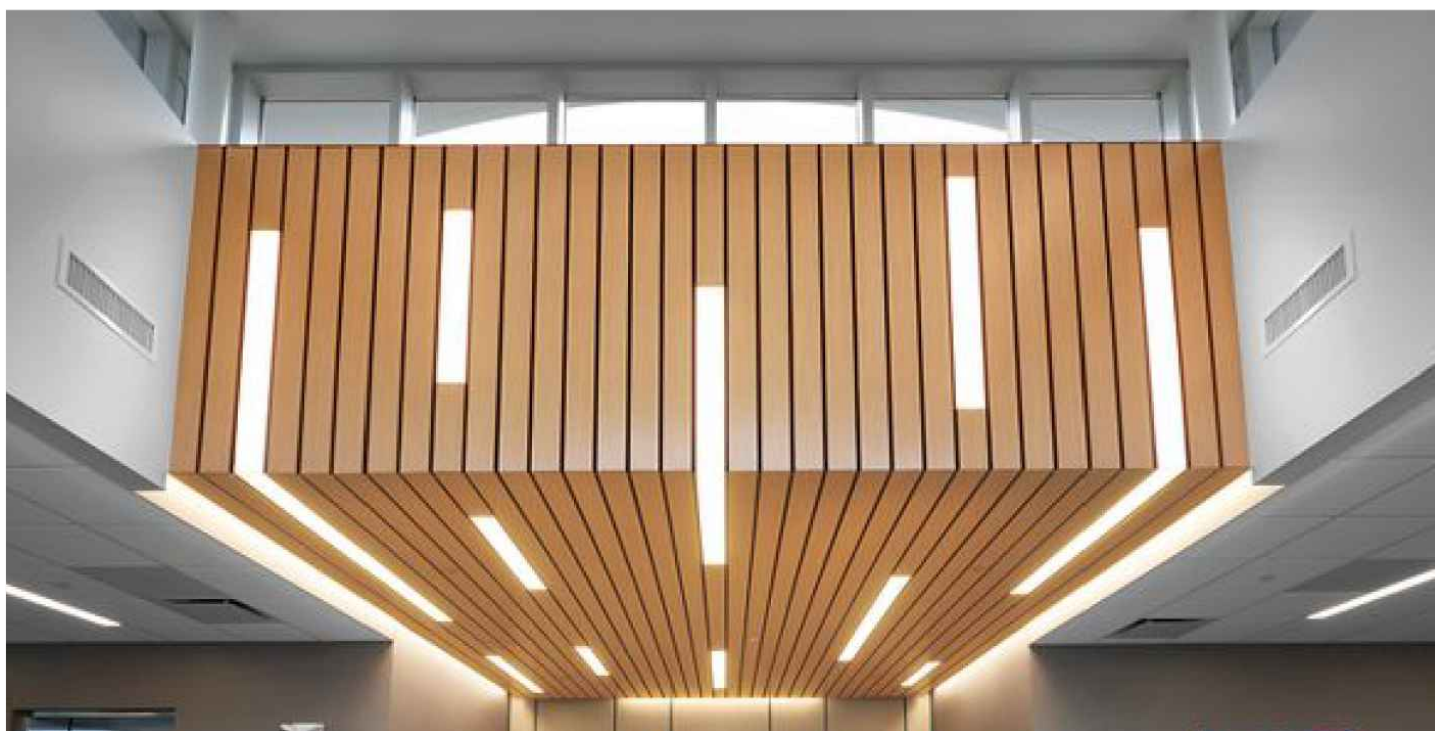
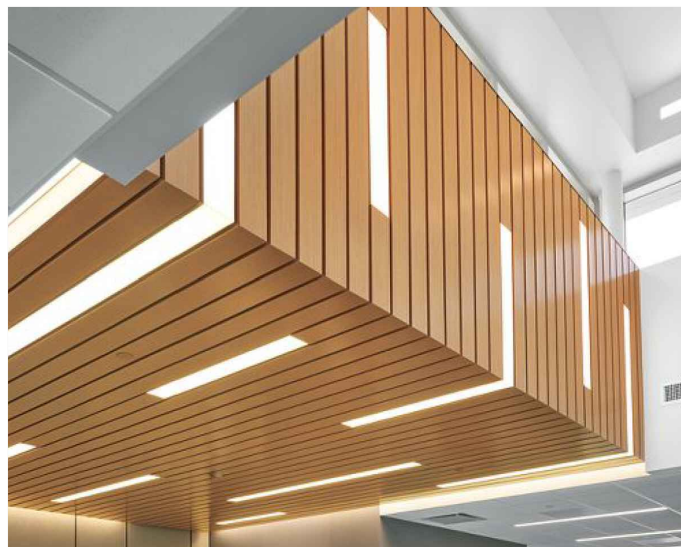
\* To buy these or other models of clips contact Armstrong® Ceiling Solutions directly.  
For additional details visit Armstrong website: [armstrongceilings.com/linearlighting](http://armstrongceilings.com/linearlighting)



# CHIARO

## Ceiling

### Example





## CHIARO

## Ceiling

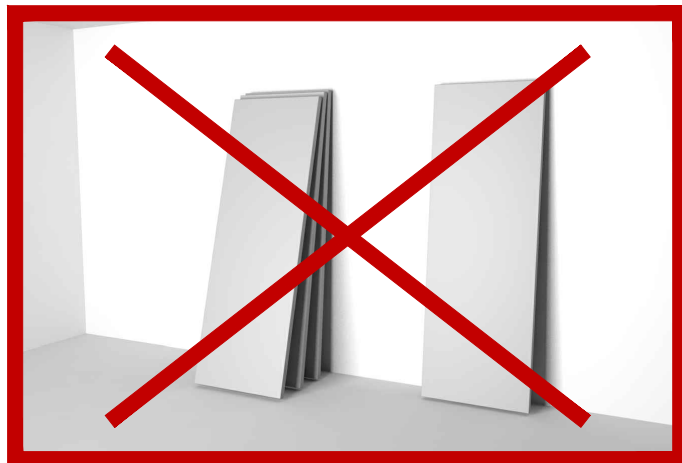
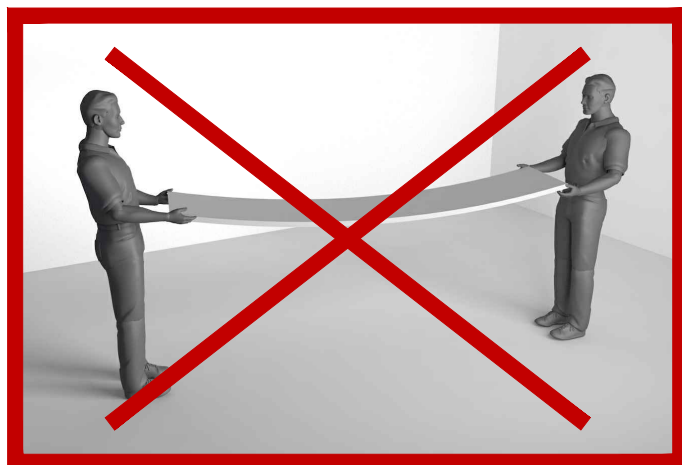
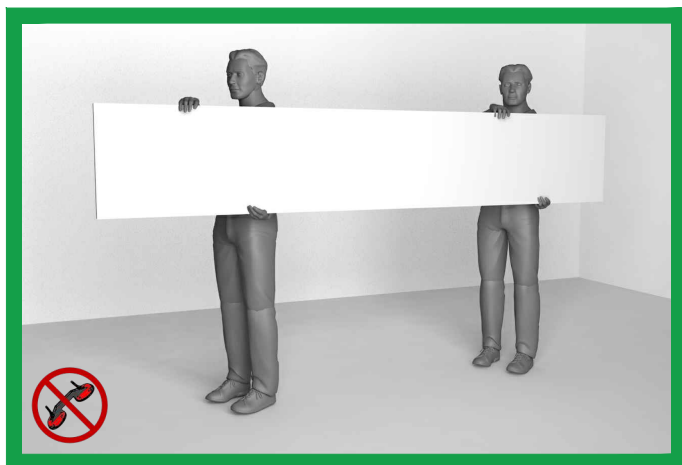
## How to handle / Warnings

STOCK THE CRATES INDOOR IN DRY LOCATION AT BETWEEN 5°C AND 25°C.

WE RECOMMEND TO LEAVE THE PANELS INSIDE THE CRATE.

TAKE THE PANEL ONLY WHEN IT IS TO BE INSTALLED.

NEVER BEND / CURVE THE PANEL DURING THE HANDLE AND MOUNTING.



DO NOT WET



DO NOT USE DETERGENTS



DO NOT USE HUMID FABRICS



**BACKLIGHT**

Via A. Volta, 5  
20876 Ornago (MB)  
Italy

+39 039 6010396  
[www.backlightsrl.com](http://www.backlightsrl.com)  
[info@backlightsrl.com](mailto:info@backlightsrl.com)